



NORTH SMITHFIELD HERITAGE ASSOCIATION

MONTHLY NEWSLETTER

Volume VI Issue 1 January/February 2025

IN THIS ISSUE:

- ~Thank you
- ~From the Archives
- ~Fifty Years Ago
- ~NS Historic Cemeteries
- ~Historic Cemetery
of the Month
- ~Veterans Memorial
Program
- ~Preservation &
Restoration
- ~Mystery Photo
- ~NSHA Merchandise
- ~Membership
- ~Outreach



Welcome 2025!

*Here's a New Year's message shared with us from
NSHA President, Rich Keene:*

Dear Members and Supporters,

As we say goodbye to 2024 and welcome 2025, we look back with satisfaction on our accomplishments and ahead with anticipation to our upcoming endeavors. NSHA volunteers worked hand in hand as officers, teammates, and committee members to keep our organization vibrant and progressive. Together with vital support from the community, you continued a host of preservation activities and events that preserve and promote our precious local heritage.

Last year you replaced the boiler at Heritage Hall, completed the restoration of the Forestdale School, and continued the restoration of the Memorial Town Building. You continued to restore the Hotchkiss Cemetery (Smithfield Rd), the Luke Philips Cemetery (Pound Hill Road), and the Richard Mowry Cemetery (Greenville Rd) while maintaining numerous other local historical cemeteries. You continued to expand, organize, and digitize the invaluable NSHA archives. You expanded our research of local pre-colonial and colonial stone features. You raised funds critical to preservation efforts through Hall rentals, grants, donations, membership dues, and merchandise sales. Just as importantly, you kept the community informed of progress and promoted town heritage through the Newsletter, Facebook, Instagram, and the recently updated website.

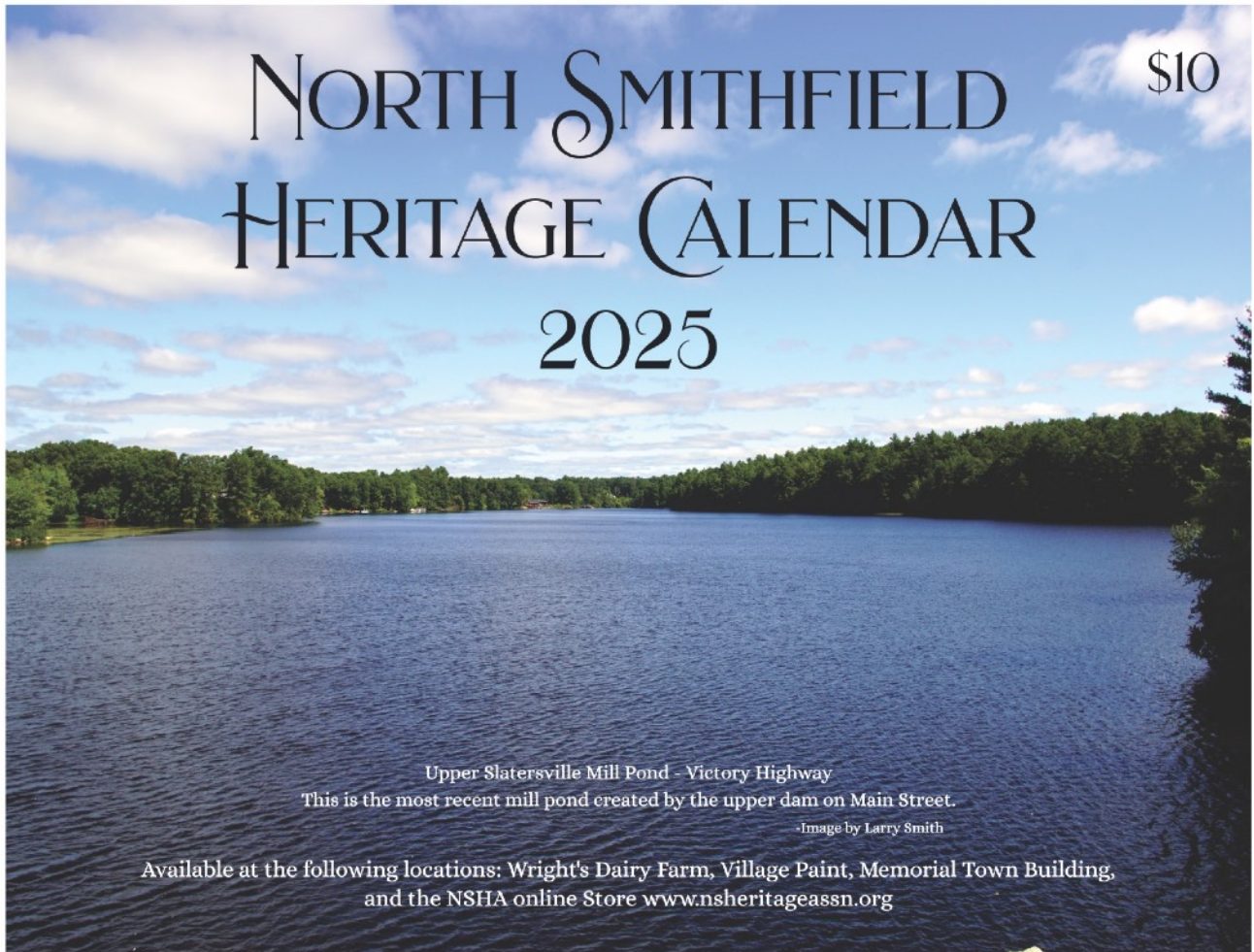
Next year, you will continue these activities, as well as undertake new ventures. You will open a new museum at the Memorial Town Building. If a grant is approved, you will also replace the hall windows there with replica arch windows. Another grant would allow you to complete a script for a new film documentary about the Indigenous Experience at Nipsachuck. It's another ambitious but achievable agenda.

I thank each one of you for your gifts of time, energy, and money to enable such significant success. Most importantly, thank you for your kindness toward one another that creates the harmony so essential for our success. I wish you all a very happy and healthy new year!



NORTH SMITHFIELD HERITAGE CALENDAR 2025

\$10



Upper Slatersville Mill Pond - Victory Highway

This is the most recent mill pond created by the upper dam on Main Street.

-Image by Larry Smith

Available at the following locations: Wright's Dairy Farm, Village Paint, Memorial Town Building,
and the NSHA online Store www.nsheritageassn.org

NSHA 2025 calendars are available now!
Calendars are available at Village Paint, Leeways Hardware and the Memorial Town Building
Purchase yours before they are gone.
They make a great gift too!



Annual Appeal 2025



COMMUNITY ANNUAL APPEAL

We rely on you to help preserve North Smithfield's amazing heritage!

WAYS TO DONATE

- Scan QR codes for PayPal or Venmo
- Mail check payable to NSHA to P.O. Box 413, Slatersville, RI, 02876
- Drop off at the Memorial Town Building
- Call 401-447-6394 to arrange doorstep pickup



For any questions or inquiries please email:

nsha@nsheritageassn.com

or visit:

<https://www.nsheritageassn.org/>



Make a tax-deductible 2025 donation! Please help fund our preservation efforts. Renovations are underway on the second floor of the Memorial Town Building, one of Slatersville's most iconic historic buildings. When finished, it will become a museum and large group meeting room.

Donations may be made via PayPal Giving Fund or through Venmo. You may also mail your cash or check donation to NSHA, P.O. Box 413, Slatersville, RI 02876. You may also pay with a credit card at our headquarters at the Memorial Town Building (1 Main Street) from 10 am -12 pm, Monday thru Wednesday. We will also pick up donations at your door!

Any amount helps enormously!



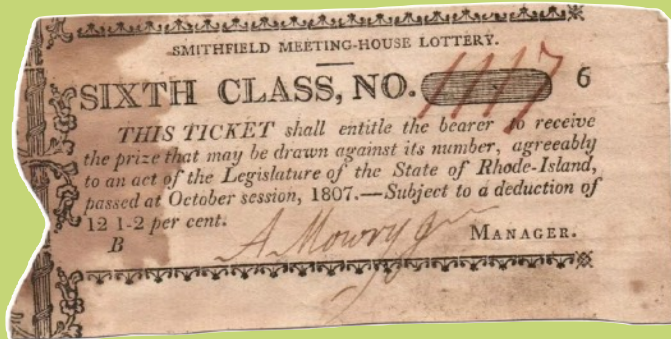
Thank You



We thank Ralph Amato, Charlie Dubois and Jeanne Marion for changing the lightbulbs and cleaning the light fixtures at Heritage Hall.



We thank Dan Sansoucy for donating a Victorian perambulator (baby carriage).



We thank Hannah H for this image of a 1807 lottery ticket signed by Albert Mowry Jr. who once owned the nearby Peleg Arnold Tavern on Woonsocket Hill Rd. Funds may have been used for a school or renovations/additions to the Friends Meetinghouse.

Your family photos and old letters contain our local heritage!

Please allow us to scan them to maintain a digital copy in our archives.

Important! Too many wonderful photos get thrown away because younger generations don't know who is in them. Images of ancestors are then lost forever. Please write the names on the back of your photos of all the people photographed and the location if possible. Use a pencil as ink may damage photos.

Please contact us at nsha@nsheritageassn.com or call [401-376-2927](tel:401-376-2927)

The NSHA Archives are located at the Memorial Town Building, 1 Main Street, Slatersville. It's open every Monday through Wednesday from 10:00 am until 12:00 pm. The Archive Team continues to work tirelessly to manage our extensive archive collection. We welcome help from anyone with an interest.

The team appreciates the opportunity to scan any photos or yearbooks from local schools that you may keep at home. Our oldest school newsletter dates back to the Kendall Dean School in 1946.



Thank You



We thank Marcel St. Germain for donating a furniture dolly.



We thank Dan Leahy and Joe Amato for donating a Civil War-era rifle.



We thank Irene Nebiker for donating this map of Native American trails in Rhode Island. NSHA Archivist, Al Menard was happy to add it to our archives.



We thank Jill Boday for donating a NS Centennial Book (1971) and a NS National Bi-Centennial Program (1976).



From Our Readers

Here's an interesting story that was shared with us from one of our readers, Herta Klamman. While researching her Smithfield Quaker roots, she came across this story about Lucy Buffum and her wedding dress. Herta researched Lucy's family and wrote an article about her.

LUCY BUFFUM'S HANDMADE BROWN SILK WEDDING DRESS

WILLAM BUFFUM (Joseph⁴, Benjamin³, Caleb², Robert¹) was born on 20 Dec 1741 in Salem, Massachusetts Bay Colony. He was a 5th generation birthright Quaker tracing his lineage back to the early Buffum Quakers of Salem who faced relentless persecution due to their religious convictions. William married LYDIA ARNOLD (1746-1828), the daughter of JOSEPH ARNOLD and PATIENCE COOK, in Smithfield on 1 Oct 1767. He was a member of the colonial-era Rhode Island Abolition Society and offered his house as a safe haven to fugitive slaves who fled New York state. William died on 27 Aug 1829 and is buried alongside his wife in the Buffum family plot in Union Cemetery, North Smithfield, Rhode Island. ([Find-A-Grave memorial # 29632966](#))

William and Lydia's daughter, LUCY BUFFUM, was born 26 Sep 1772 in Smithfield. She lived near Slatersville and married widower WALTER ALLEN of Union Village on 1 Feb 1800. Walter was a devout Quaker and active member of the Smithfield Meeting serving as a clerk for many years. They exchanged their marriage vows at the Quaker meeting house in Smithfield, currently Woonsocket. Forty Quaker community members witnessed the wedding ceremony representing the families of Buffum, Allen, Smith, Wing, Mowry, Inman, Aldrich, Southwick, Arnold, and Pain. (Smithfield Monthly Mtg. Marriages, 1723-1905, p 167)

A news article citing Lucy's unique wedding dress was published in 1873 and gained significant attention and was reprinted by numerous newspapers across the country. (The Providence Daily Journal, Oct 14, 1873, Providence, RI, p 2) Lucy's distinctive dress of brown silk was made entirely by hand. She cultivated silkworms, extracted the thread from the cocoons, spun it, dyed it, wove it, and ultimately fashioned her dress. The finished product was a striking dark brown ribbed silk gown appropriate for the era. The trend of brides wearing white became popular after 1840 and is widely credited to Queen Victoria, who donned a white gown for her wedding to Prince Albert. Prior to this fashion shift, brides wore various colors. Pieces of Lucy's wedding gown were preserved by her descendants and a sample of the fabric was displayed at the World's Industrial and Cotton Centennial Exposition, New Orleans, 1884-1885. The Women of Rhode Island submitted an exhibit to showcase the labors of their work. Among the items of lace and needlework was a sample of Lucy's handmade silk. This notable item was believed to be the first silk manufactured in this country. (The Canton Daily Repository, Nov 20, 1884, Canton, OH, p 5)

Lucy passed away on 5 Jan 1807 at an early age of 34, unaware of her notable contribution to the history of the Blackstone River Valley. She and Walter had one daughter, Lydia Allen (1805-1856), who became the wife of EFFINGTON LAWRENCE CAPRON (1791-1859). Capron was a Quaker, textile mill proprietor, and nationally esteemed figure in the anti-slavery movement. He was a passionate abolitionist during the pre-Civil War era and served as a leader of the Uxbridge branch of the Underground Railroad.



Lucy Buffum Allen, 26 September 1772 - Jan 1807, Friends Cemetery, Woonsocket, RI.

Herta *Smith* Klamman
22 Dec 2024



From the Archives

Alice LaFond Altieri-First Woman from North Smithfield to be elected to State Office By Al Menard



A pioneer in politics from North Smithfield, Alice LaFond Altieri overcame opposition from men who believed women should not be involved in politics.

In our last issue we remembered Eva Pitts, the first woman to be elected to a public office from North Smithfield. As she marked her final two years as chairperson of the North Smithfield School Committee, a young Alice Lafond was elected to that Committee becoming the second woman to hold public office in North Smithfield. Alice's groundbreaking political journey would have a lasting impact on Rhode Island politics, eventually leading her to become the first woman from North Smithfield elected to state office.

Alice was born on May 1st, 1894, in North Smithfield. Her parents were Ernest P. and Maria Theresa McCarthy Lafond. They were Canadian immigrants who came to North Smithfield around 1890 and established a prosperous farm on Woonsocket Hill Road. Their five children all went on to become successful professionals.

Alice attended Woonsocket High School and later Boston University, where she worked as a secretary in a photographer's studio. During the war, she served as clerk at the US War Department Office in Washington, D.C., and later in Boston and Maine. Eventually she became the Deputy Collector for IRS District of Rhode Island.

In 1925, the vibrant and energetic Alice Lafond was stricken with tuberculosis. She spent two years in a TB sanitarium in Sharon, Massachusetts, during which she lost a diseased rib and one of her lungs collapsed. Despite these significant health challenges, Alice bravely fought through and gradually recovered.

Alice's political journey began in 1930 when she was elected to the North Smithfield School Committee. Remarkably, she was the only Democrat to win a town office in North Smithfield that year, breaking a Republican stronghold that persisted since 1922. In 1934, she was elected to the State House of Representatives. Notably, after her 1934 victory, no Democrat won the North Smithfield House seat until 1958.

Throughout the following years, Alice dedicated herself to the welfare of North Smithfield and the state of Rhode Island. She played an active role in Rhode Island's civic and political history. She was a committed volunteer for the Woonsocket Chapter of the American Red Cross and a member of several organizations, including the Garden Club of North Smithfield, the Rhode Island Joint Committee of Public Health, the Rhode Island Children's Court Association, the North Smithfield Ambulance Association, the Woonsocket Hospital Aid Association, the Butler Health Center, the Bradley Hospital Corporation, and the North Smithfield Heritage Association. Additionally, she was appointed to the Board of Directors for the Visiting Nurse Service of Greater Woonsocket.



From the Archives

In 1941 Alice resigned from politics to marry Hercules A. Altieri, a colleague from the Rhode Island Dept. of Social Welfare. She was forty-seven years old. Hercules was a lawyer and fiscal agent for the Office of Social Welfare.

Unfortunately, their wedded bliss was short-lived, as Mr. Altieri suffered a major stroke in 1948, leaving him completely incapacitated.

Despite personal obligations and health problems for both herself and her husband, Alice continued to dedicate herself to the health, education and welfare of her fellow citizens. During this time, she continued her volunteer work with the Red Cross, the North Smithfield Ambulance Corps, and the United Fund.

In 1961, she was appointed Director of Public Welfare for North Smithfield, a position she held until 1968. One of her final Contributions to the town was serving as a member of the North Smithfield Centennial Committee.

In 1974, Alice's husband Hercules passed away and Alice followed in 1976 at the age of 80. They are buried together in the LaFond family plot at St. Charles Cemetery in Blackstone, MA.

(Thank you to Beth Faricy who provided some of the resources for this article.)



This photo appeared in *The Telegraph*, where it was captioned: "Rhode Island's only woman legislator is Miss Alice LaFond, a Democrat from North Smithfield, who was elected to the House of Representatives."



Alcie lived most of her life in Union Village. She and her husband, Hercules, lived in this house on Great Road. It was built in 1805, possibly by Walter Allen.



Fifty Years Ago

From the January 1975 edition of the NSHA Newsletter

Glimpses Of Life On The Old Todd Farm

The ancient Todd farmhouse is one of the few eighteenth century country homes still extant in North Smithfield. Now the residence of Mrs. Robert Lincoln Todd, the farm has been owned and operated by generations of Andrews, Smiths, Tafts, and Todds- all woven together by marriage.

The central part of the house could have been built before 1750. Judging by the type of construction, the additions on either end of the original building may have been completed by 1800, and give the whole house an aspect of unusual length. At one time the house served as a tavern. In the north end the "Tap Room" is on the first floor with its bar and serving window. A barrier of vertical rods was provided to be slid into place on Sundays. Upstairs over the tap room is the "Assembly Room" with narrow built in benches around the sides. Here the weary travelers on foot, horse, and stage coach could have found food, drink and shelter.

Farming was not the only industry conducted at this place. David Andrews, born in 1784, learned the trade of millwright. It could have been he who constructed the dam and sawmill on Todd's pond. This dam and sluiceway provided the water power to operate a sawmill here at an early date. The mill furnished timbers, clapboard shingles and planks for many early homes and barns in the old Smithfield area. As late as 1894, David C. Todd was sawing lumber and furnishing the area with builders' materials and hardware.

Todd's pond was the source of an extensive ice operation carried on in the mid-1800 period. A picture of the ice house exists, but the structure is gone from its site near the dam.

"Cedar Valley Farm" was the heading on the poultry and egg bills in 1890, and the proprietors then were David C. Todd and his only offspring, Albert. Albert, born in 1872, was a master of penmanship. In later years he became the trustee of the Andrews District School (District 11 in Primrose). The unhurried and easy manner in which the school business was conducted in those days is indicated by the following letter from Albert to Miss Jessie E Bailey, teacher of the "Andrews District School":

North Smithfield, RI
Feb. 20, 1899

Miss Bailey,

As the walking is very bad, I think there will not be many at school today, so if there is no more than Eunice and Avis there, I think it proper to close the school all this week.

Yours truly,
A. E. Todd



The Todd farmhouse as it looks today.



NS Historic Cemeteries

NS 14, The Lewis Follett Lot by Lynne Pelletier



NS 14- Lewis Follett Lot

This edition's featured cemetery is the Lewis Follett Lot, located on Follett Street near a driveway across from Wicks Street. This 30' X 30' cemetery is well taken care of and is in excellent condition. There is no enclosure around the cemetery; instead, a natural rock formation forms the back wall of the lot. The Rhode Island Historic Cemetery Commission database lists that there are 13 burials here: 10 graves with inscriptions and 3 fieldstone markers. However, FindAGrave.com lists 19 burials. Perhaps the discrepancy is due to the more recent graves not being added to the RIHCC database yet?

This cemetery is the final resting place for several generations of the Follett family. The name of the cemetery comes from Lewis W. Follett, born on 14 Apr 1793 in Cumberland, Rhode Island to parents Joseph G Follett and Mary Jillson. Lewis married his wife Rebekah Mathewson on 10 Jun 1824. Rebekah was the daughter of Joseph Mathewson and Elizabeth Brown and she was born in about 1804. Lewis and Rebekah had at least two sons: Whipple Mathewson Follett and George Henry Follett. Lewis was a farmer by trade and he died on 09 May 1867 at age 74. Rebekah had died the previous month on 01 Apr 1867 at about age 63.



Whipple Mathewson Follett

Whipple Mathewson Follett was born 22 Nov 1824 in Smithfield, RI. He also was a farmer by trade and he enlisted in the US Navy in 1862. During his one year of service in the Civil War, he served on the U.S.S. Sabine. On 25 Nov 1868, Whipple married Minerva Mowry Smith. It was Minerva's second marriage as she had lost her first husband, Daniel D. Smith in 1861. Minerva had two children with Daniel D. Smith and then added 3 more to the family with her husband Whipple.



Minerva Mowry was born 26 May 1835 to David King Mowry and Freelove Ballou. Minerva and her two older siblings, Desire and Charles, were all born deaf and mute. In 1844, at age 9, Minerva joined her siblings at what was then known as the Connecticut Asylum for the Education and Instruction of Deaf and Dumb Persons in West Hartford, Connecticut where they learned American Sign Language. Today the school is known as the American School for the Deaf.



Minerva Mowry Smith Follett



NS Historic Cemeteries



A painting by Minerva Follett

Gallaudet Jubilee, a 100-year celebration commemorating Thomas Gallaudet's birth, at Fanueil Hall in Boston on 10 Dec 1887.

Minerva died at the home of her daughter in Bridgeport, Connecticut on 23 Jan 1925 at the age of 90. Her obituary from the Bridgeport Telegram states that Minerva was "a prominent religious and historical lecturer 40 years ago and was well known in New England Historical Societies."

The remainder of the graves belong to Whipple and Minerva's son Lewis Whipple Follett Senior and his descendants. Lewis Whipple Follett Sr., was born in North Smithfield on 06 Apr 1875. He married Elizabeth Mabel Ballou on 21 Oct 1896 and together they had 6 children. Elizabeth was the daughter of Luke Ballou and Eliza Smith. Elizabeth and Lewis were married for 53 years before her death at age 71 on 09 Dec 1950. Lewis was also a farmer and later in life became a forest fire warden. Tragedy struck the family on 26 Apr 1905 when a wind-fueled fire swept through the family homestead and burned the 12-room family home, barn and outbuildings. The Woonsocket Call reported that luckily the family was not at home at the time of the fire but many family heirlooms were lost. Lewis Sr. and all but one of his five children eventually built homes on the old farm. Today, one grandchild, seven great-grandchildren and two great-great-grandchildren still own homes on the old farmstead along Follett Street and Woonsocket Hill Road. Lewis Sr. was a past master of the Primrose Grange and an active member for many years. He died on 20 January 1968 at age 92.

Lewis Whipple Follett Junior was born 20 Dec 1897. He married Rachel Brierly and together they had 4 children. Lewis Whipple Follett, Jr., was a World War I veteran having enlisted in April of 1919, served in the Philippines and was discharged in April of 1922. He was a self-employed carpenter by trade. Lewis died at age 67 on 03 Oct 1965.

Minerva was said to be "a remarkable student and was given high praise for her pencil watercolor drawings;" in fact, her drawings were even displayed at the Woonsocket Horticultural and Industrial Fair at Harris Hall in 1868. She was also a poet and wrote a poem about the life of Thomas Hopkins Gallaudet, a teacher, principal and the co-founder of the American School for the Deaf. Minerva signed this poem, which was printed on the front page of the Boston Herald, at the

Mrs. Minerva Follett of Rhode Island recited a composition, written by herself. The principal lines were:

"A hundred years have passed away
Since first he saw the light of day.
He came not heralded by fame,
Nor did he bear a princely name;
His origin was grand, but low—
A child of exiled Huguenots.
With matchless love and zeal combined
He labored to instruct the mind,
And God designed him to become
The prophet of the deaf and dumb.
He led poor mutes from scenes of strife
Up to a higher plane of life.
And when at last his race was run,
And God proclaimed his work well done,
Beloved by all who knew him best,
He passed to his eternal rest."

Minerva's poem as it appeared on the front page of the Boston Herald on 10 Dec 1887



Lewis Whipple Follett Jr.



Veterans Memorial Program



Veterans Memorial Program

The U.S. Flag will fly at the Memorial Town Building each month in honor of a deceased local veteran. The VFW and NSHA will conduct a brief flag-raising ceremony in honor of the veteran as well as publish a brief biography of the honoree's military service in the NSHA newsletter. Families can use the honored veteran's Memorial Flag or the VFW Flag. Family or friends may contact the NSHA to nominate a veteran.

Research Team

The Research Team continues to locate and document local colonial, indigenous and other historical stone features.

The Research Team generally meets at 6:00 pm at Heritage Hall on the second Friday of each month.

Please contact NSHA or just show up if you'd like to participate!



Research team photo- Prayer Seat at Nipsachuck- Scalzo property 12/05/2024



Monthly Board Meeting



The Board of Directors will meet at 6:30 pm on Tuesday, January 21, 2025 at Heritage Hall, 101 Green Street. Members are welcome to attend in person or via Zoom. See the meeting email for instructions to join via Zoom.

Genealogy

Would you like help to conduct research on your family tree?

Lynne Pelletier has extensive experience and access to several databases. Please contact nsha@nsheritageassn.com to coordinate an appointment.



Ghosts and Paranormal Activity



Kara Pessia, a local spiritual medium continues to help with spiritual research!

Have you heard about or seen a ghost in North Smithfield? We would like to document it! Anyone interested in joining the Paranormal Research Team please contact us at nsha@nsheritageassn.com.



HERITAGE HALL

*Perfect for
your small
Event*

101 GREEN ST
NORTH SMITHFIELD, RI
NSHA@NSHERITAGEASSN.COM

CHAIR LIFT ACCESSIBLE



Heritage Hall Rentals (101) Green Street

Rent the newly renovated upper and lower halls!

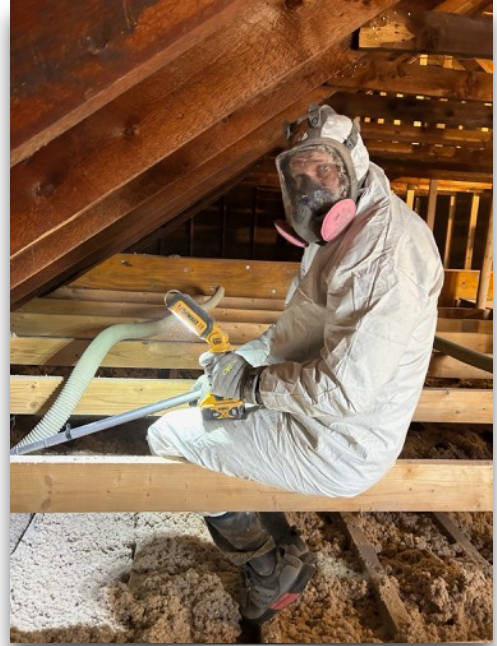
Visit the NSHA website for a rental application and rules: <https://www.nsheritageassn.org/general-3>

Call Jeanne at (401) 447-1801 to make a reservation or send an email to nsha@nsheritageassn.com



Preservation and Restoration

Forestdale School (190 School Street)



Help Wanted

We need volunteers to open the Forestdale School to the public. Please contact us if you can spare a couple of hours a month. Meanwhile we will continue to open the building by appointment.

Jon Peirce is suited up in protective gear to install the insulation.



We thank the volunteers who showed up to install 82 bags of cellulose insulation in the Forestdale School attic.

Rite Glass recently installed four new storm windows at the Forestdale School. They will improve energy efficiency, protect artifacts from UV exposure and protect the original wood sashes from the weather.

We're raising money for four more!



Preservation and Restoration



Memorial Town Building (1 Main Street)

APG applied the first coat of paint to the main hall ceiling at the Memorial Town building. After applying a second coat, they will start to paint the walls.

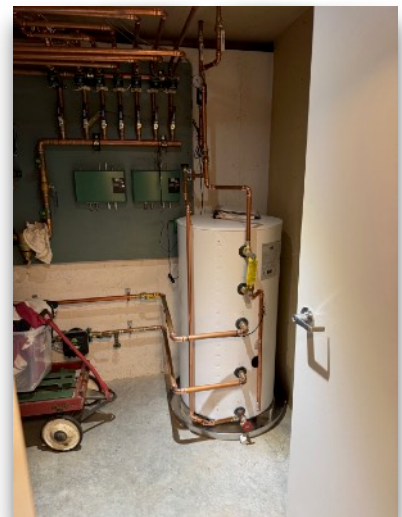
We're now raising funds to replace the old metal double hung windows with replica arched windows, much like the ones in the current town council chambers.



Heritage Hall (101 Green Street)

ACS recently installed a new water heater at Heritage Hall.

We thank our donors for their generous support!





Awards and Recognition



Beth Faricy, Rich Keene, Jeff Harris and Blackstone Heritage Corridor Executive Director, Devon Kurtz.

Congratulations!

The John H. Chafee Leadership Award was given to Rich Keene at the Blackstone Heritage Corridor Champions of the Blackstone Awards Reception. It was presented to him by Beth Faricy and Jeff Harris who did a great job putting together the nomination for this well-deserved recognition. Rich has pulled many people together to develop a team to promote preservation and information dissemination to keep North Smithfield's history alive.



Rebecca Fairbank, Chapter Regent of the Beacon Pole Chapter of the DAR presents award to NSHA President, Rich Keene.

The Beacon Pole Chapter of the Daughters of the American Revolution Chapter Regent, Rebecca Fairbank attended the NSHA Holiday Party and Annual Meeting to present NSHA President Rich Keene with an award to recognize the organization's efforts in keeping the history of the town of North Smithfield alive.



Upcoming Events

Park Ranger Walk- Booth Pond Saturday, January 18, 2025 at 10:00 am. 71 Booth Pond Way, North Smithfield, RI.

National Park Rangers will conduct a guided tour of the trail network at Booth Pond, a conservation area owned by the NS Land Trust. The one mile woodland trail is well-marked and relatively easy to navigate.

At the end of the walk, NSHA guides will lead those who wish to take an extended 2 mile walk through the adjoining Souza Conservation Area. Park at the trailhead or nearby at Aldi's. Wear comfortable hiking shoes or boots and apply tick repellent for this woodland trail.



Booth Pond beaver dam



View of Mammoth Mill park taken from the new bike path extension.

Mammoth Mill Park Cleanup

Monday, January 20, 2025 at 9:00 am

Volunteers will gather for the annual park cleanup. We will continue to clear trash, brush and trees along the old mill stream. Volunteers are asked to park on Mill Street, North Smithfield.

History Night Presentation

The Civilian Conservation Corp-Primrose Camp

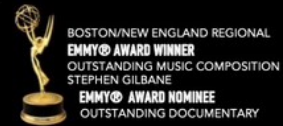
**Friday, February 2025 at 7 pm, 101 Green Street,
North Smithfield.**

Noted historian and author, Marty Podskoch will describe the Civilian Conservation Camp (CCC) Program and its Primrose Camp during the Great Depression. The NSHA will also display artifacts from the camp.





JOIN US FOR 3 SPECIAL PUBLIC SCREENINGS!!



EPISODE 6
They Will All Be My Friends
FRIDAY JANUARY 17
7:30PM

EPISODE 7
The War Years
FRIDAY JANUARY 24
7:30PM

EPISODE 8
The Power of Nostalgia
FRIDAY JANUARY 31
7:30PM

A CHRISTIAN DE REZENDES PICTURE



Slatersville Congregational Church
25 Greene Street, Slatersville, RI



Free will offering at door | Doors open 7PM
All screenings followed by Filmmaker Panel Q&A
Learn more at firstmillvillage.com



January/February Mystery Photo



This photo was found at the Forestdale School and is now at the NSHA archives. Unfortunately, it had no notes attached. If you can help identify the students, faculty, school or date, please contact us!



November/December Mystery Photo

There were no responses to our query about the identification of this home. Maybe it's not from North Smithfield? For now, it remains a mystery!

The NSHA often receives photos without any type of identification which is why we post them here. Please help us to identify them for our archives!



NSHA Merchandise

NEW!! 2025 Calendars and Birdhouses! Calendars are available at Village Paint, Leeways and the Memorial Town Building.

We offer a wide range of merchandise including calendars, books, maps, puzzles, ornaments and much more! Get 2024 calendars at a 50% discount.



View our entire inventory at the **NSHA On-line shop** at <https://www.nsheritageassn.org/shop>

NSHA Payment Options

1. **PayPal Giving Fund:** search for nsha@nsheritageassn.com, select “**Donation**” and type the purpose for the payment on the memo line.
2. **Venmo:** Open the Venmo app and search for **North Smithfield Heritage Assn@NorthSmithfieldHeritageAssn**. Tap on Pay, enter the dollar amount to be paid, and fill in the field what’s it for (ie., dues, merchandise, donation etc). Tap on Pay and select your payment method you have established in the Venmo app.
3. Give **cash or check**. Make checks payable to “**NSHA**”. Note “**Dues, Annual Appeal or Merchandise**” on the memo line.
4. **Mail Checks** to NS Heritage Assn, P.O. Box 413, Slatersville, RI 02876.
5. We will also pick up payments and deliver purchases at your door if you live locally. Contact nsha@nsheritageassn.com or call [401-376-2927](tel:401-376-2927).



The North Smithfield Heritage Association Fund

Estate planning? Need to make a Required Minimum Distribution (RMD) from your IRA? Consider making a donation to this fund to avoid paying higher taxes. The RI Foundation manages the fund, helping it to grow every year. Annual disbursements fund the NSHA’s preservation activities and our town’s wonderful heritage.

Click on the link for more information:

<https://rifoundation.org/giving/funds?q=north+smithfield+heritage+&s=3>



Outreach

~ We welcome new members: James McDonald, Beth and Brian Newberry, Ralph and Annette Amato, Ed and Brenda Baffoni!

~ **We thank our wonderful members for their vital support!** Our membership now stands at 209 including 42 life members and 6 students. Some members live as far away as NH, CA, WA and AR.

~**Your \$20 Annual Dues on January 1, 2025.** Your dues help significantly to fund our local preservation activities. You can become a member by filling out an application found on our website:

<https://www.nsheritageassn.org/membership>

~We thank the members renewed their 2025 membership dues! Members in arrears or with expired memberships can renew at any time. Seniors over 75, high school students and full-time college students pay no dues. **If you are not sure of your status, please contact us.**

~You may pay membership dues online via the PayPal Giving Fund, or Venmo, by mail to P.O. Box 413, Slatersville, RI 02876 or in person on Monday, Tuesday and Wednesday mornings at the Memorial Town Building. You can also drop off a check in our mailbox in the rear of the Memorial Town Building.

You Can Help!!

Join: Membership costs just \$20 each year!

Volunteer: Help with any of our ongoing activities and events. No need to make a steady commitment. We appreciate whatever time you can spend with us!

Donate: Our Annual Appeal runs all year long. We accept local artifacts. We appreciate whatever you give!

Share: Share this free newsletter with family and friends. Encourage them to subscribe. Only shared history can preserve our heritage!



Instagram (nsha1970)
Please follow us!

Instagram followers:298
<https://www.instagram.com/nsha1970/>

Visit our **Facebook Page** to learn about our events and activities. Get acquainted with some of our members and supporters. Like and share with friends and family!



www.facebook.com/northsmithfieldheritage

Facebook followers:1,448

We thank Julie Tilley for making posts to all of our social media platforms,

We continue to see steady follower growth!

Website visitors: 316 site sessions in last 30 days.

Visit our website! Read past newsletters, learn about our organization as well as our many ongoing historic preservation activities. <https://www.nsheritageassn.org/>

NSHA Newsletter Subscribers:1590

To join our mailing list, simply contact us at nsha@nsheritageassn.com or [401-376-2927](tel:401-376-2927)



2025 NSHA Calendar Sponsors

Village
PAINT & DECORATING

Keith Klockars
Vice President

PO Box 364
900 Victory Hwy
Slatersville RI 02876
www.villagepaintinc.com

Phone: 401-765-3129
Fax: 401-767-2468
Mobile: 401-524-5587
Email: vpandd@gmail.com

Benjamin Moore Paints

The Woonsocket Sportsman's Club

145 Log Rd
Harrisville, RI 02830
401-374-4639
wsclub.ri@gmail.com
woonsocketsportsmanclub.com

The beef barn

200 Industrial Dr., North Smithfield, RI 02896
Tel: 401-762-9880 Fax: 401-762-9224
Marc Branchaud

• SINCE 1942 •

HERCULES
PIZZA • SANDWICHES • WINGS • MORE

7 Main St, Slatersville, RI 02876
401-766-1111

LINDY'S
EST. 2008
TAVERN

Known for our
FRESH SEAFOOD
GREAT BURGERS
and **DAILY SPECIALS**

OPEN 7 DAYS

Where Old & New Friends Meet!
98 School Street
FORESTDALE, RI
401-356-1966
Locally Owned and Operated
Bon Carter, Owner

C&C GARAGE
ALL YOUR REPAIR NEEDS

AUTO, TRUCK, MOTORHOME
ASE CERTIFIED

140 MONEY HILL RD
CHEPACHET, RI 02814
401 371-2791
GUARANTEED WORK

STANLEY TREE

Residential & Commercial
Tree Services
401-231-8733

Tree Removal • Tree Pruning
Stump Grinding • 24/7 Emergency Tree Service

SCHEDULE YOUR FREE QUOTE TODAY!
Get in Touch with us to keep your Trees Happy & Healthy

VETERANS OF FOREIGN WARS
UNITED STATES

LECLAIR KOZLIK
LOGAN BASSETT
POST NO. 6342
VETERANS OF
FOREIGN WARS

Wright's
DAIRY FARM & BAKERY

MON-SAT 8-7PM SUN 8-5PM
PLEASE CALL FOR HOLIDAY HOURS

watch cows being milked from 9-11:30pm everyday

EXPERIENCE A 100 YEAR OLD WORKING DAIRY FARM

Navigant
CREDIT UNION

Leeway ACE
Hardware

790 Great Road • North Smithfield, RI
401-765-2222

NORTH SMITHFIELD FENCE, INC.
Complete Line of Residential & Commercial Fencing

375 St. Paul Street
North Smithfield, RI 02896

PHONE (401) 769-2575
FAX (401) 766-2956
WEB www.nsfenceri.com

Mike & Terri Bartamiali, OWNERS

This newsletter is published by Lynne Pelletier. The editorial team includes Beth Faricy, Jody Lamoureux, Linda Rawlings, Al Menard and Rich Keene.

Please share this free newsletter with family and friends!!